

ApeosPort

C5570

C4470

C3370

C3371

C2270

**FUJI xerox** 

# ApeosPort-IV

## C5570 / C4470 / C3370 / C3371 / C2270

### Digital Colour Multifunction Device

#### Colourful innovation



Print. Copy. Scan. Fax. Innovation that drives document production to a new level. Breakthrough technologies deliver superb colour speed, better reliability, easy-to-use advanced features and environmentally conscious engineering.

Fuji Xerox's Apeos iiX (Apeos Internet Integration based on XML and SOAP) is a software platform inside the ApeosPort-IV C5570 / C4470 / C3370 / C3371 / C2270 multifunction devices that can be customised to meet your specific functional requirements<sup>1</sup>. By connecting several business critical applications, you can increase staff productivity, as well as improve business and environmental efficiencies.

<sup>1</sup>Optional. Fuji Xerox's development team provides a range of customisation services to tailor applications to address unique needs.

#### Features at a glance

- Print, copy, scan and optional faxing
- Print up to 55 ppm black and white, 50 ppm colour
- True 1,200 x 2,400 dpi print resolution
- Intuitive, easy-to-use colour user interface
- Security features for demanding office environments
- High impact colour with built-in control and accounting features



Copy



Print



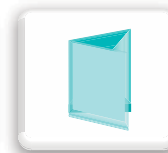
Scan



Email



Fax



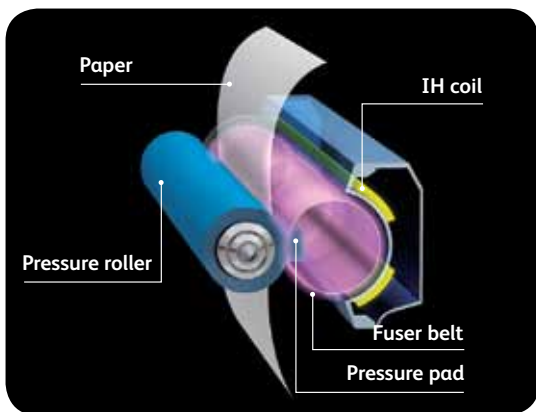
Finishing



ApeosPort-IV C5570 with Tandem Tray Module and optional Booklet Finisher-C1

Designed with the environment in mind, the ApeosPort-IV C5570 / C4470 / C3370 / C3371 / C2270 conserves precious resources without sacrificing performance or quality.

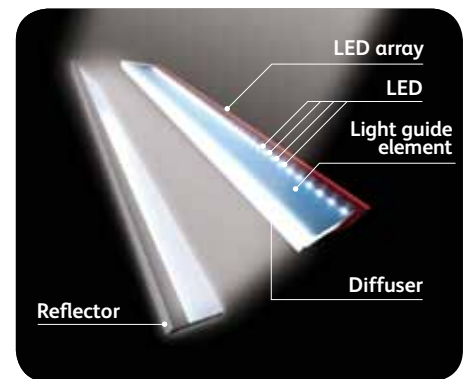
### IH Fuser



This newly developed Induction Heating Fusing Technology incorporates a thin, non-magnetic metal as the heating layer inside the fuser belt which enables greater energy efficiency. With this new technology, the fusing unit does not require pre-heating and doesn't consume power when the machine is in standby mode. As a result, a fusing unit with the world's quickest start-up time of only 3 seconds providing Fuji Xerox with a tremendous competitive edge.

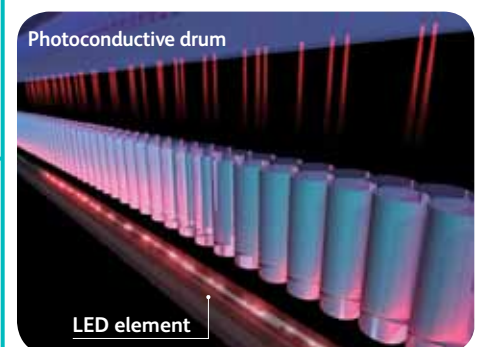
<sup>1</sup> Correct at the time of publication.

### High-Intensity White LED



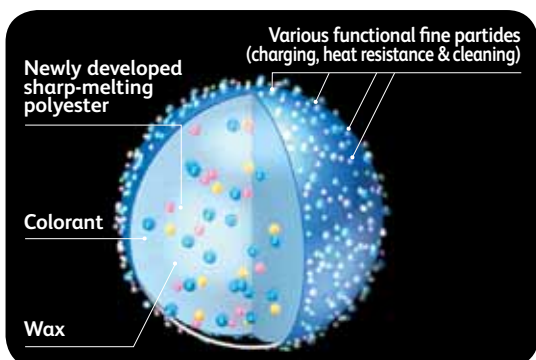
For the first time, Fuji Xerox is using LED (light emitting diode) as the light source for image scanning. This enables brightness that is 1.5 times greater than xenon lamps used in conventional devices and reduces the power consumption by 70%, while achieving greater scanning precision and speed.

### LED Printhead "DELICIS"



Fuji Xerox has developed a high-precision, LED print head technology "DELICIS" (Digitally Enhanced Lighting Control Imaging System) that achieves an output resolution of 1,200 x 2,400 dpi that is equivalent or even superior to that produced by a conventional laser raster output scanner (ROS) system. LED print head technology makes it possible to build even smaller devices and reduces power consumption by 45%.

### EA-Eco toner



EA-Eco toner has been adopted in products for office use. Fusing temperature of the EA-Eco toner is more than 20°C lower than that of conventional toners, cutting power used by around 15%.



New advances in Fuji Xerox technology create an extremely reliable print engine, with additional design features focused on a great user experience.

**Smaller overall footprint.** Thoughtful engineering delivers more functionality while taking up less space. The compact new imaging system lets you add the integrated Finisher-A1 (stapler) without increasing the device footprint.

**High-capacity paper trays.** Up to 5,120 sheets mean fewer trips to load paper, especially during long print jobs. ApeosPort-IV C5570 / C4470 / C3370 / C3371 / C2270 can be configured with the following tray options:

- One Tray (A5 to A3) plus Three Tray Module (A5 to SRA3)
- One Tray (A5 to A3) plus Tandem Tray Module (Tray 2: A5 to SRA3, Tray 3 & 4: A4 only)

Plus

- An optional 2,030 sheet High Capacity Feeder can also be added to enable longer uninterrupted job runs

**Professional finishing options.** Create professional presentations and attractive manuals or proposals. This range of optional finishers gives you efficient, finish-on-demand versatility. These advanced finishers feature stapling, hole punching, saddle stitching and many other finishing tasks.

**New design, colour user interface** is an 8.5-inch WVGA colour TFT screen that provides a high-precision display using colourful icons and larger buttons. The user-friendly layout allows users to complete a job hassle-free with smooth left to right control panel operation.



## Configuration Options



**5**  
New design,  
colour user interface



**6**  
Status indicators  
on edge



# Advanced scanning

Now it's easier to bring paper documents into the network, with the sophisticated scanning tools you'll find in these leading-edge multifunction devices.

**Cutting-edge scanning functionality.** Increase efficiency with Scan to Email for quick document distribution to multiple email addresses, Scan to Folder to store on the device and Scan to Home to store on a personal directory. Plus Scan to Network Folder or FTP.

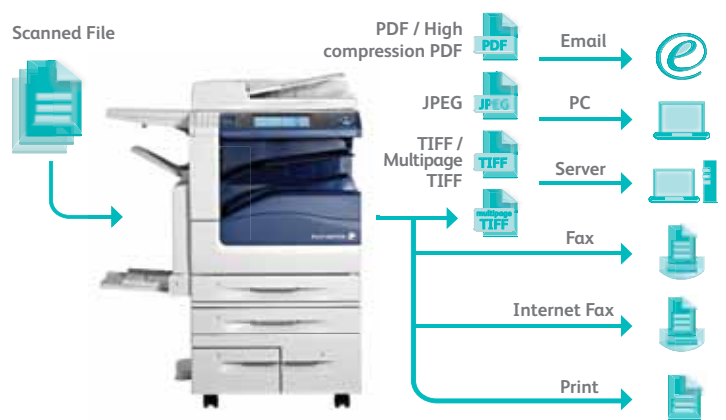
**Create searchable PDF files at the device** for easy archiving, organising, searching and sharing. Creating a text searchable PDF file is as easy as choosing a file format when programming a scan job – it can even be designated to the default format<sup>1</sup>.

<sup>1</sup> Optional Searchable PDF Kit and High Compression Image Kit are required.

**Store frequently printed documents.** Increase employee efficiency with robust scanning features that store frequently used forms and documents in the device's hard drive for subsequent reprinting.



**Automatic file distribution.** This feature lets you route documents to multiple destinations – email, folders, fax or print – from a single scan, using a pre-set workflow.



**Scan to Home.** As easy as copying, documents can be scanned directly to a pre-designated folder on an authenticated computer for immediate use or archived for later retrieval.

**Light directory access protocol (LDAP)** takes the time and effort out of scanning a document to email by providing users with search access to the email address of an intended recipient from the network's address book.

**Streamline network traffic and create greater operational efficiency** by sending information via a URL link. Send a URL link that brings you directly to a file's location rather than the document itself.

**Quickly scan files directly to a USB flash drive** through the USB port that is conveniently located on the front of the device<sup>2</sup>. It requires no printer drivers, or even a PC!

<sup>2</sup> Optional Scan to USB Kit is required.

# Highly usable, highly productive

The ApeosPort-IV C5570 / C4470 / C3370 / C3371 / C2270 offer solid performance backed by unprecedented ease of use. User-centric design makes it easy to take advantage of its advanced features.

**Print speeds that match the speed of your business.** Output colour documents at a fast 25 ppm, 30 ppm, 35 ppm, 45 ppm or 50 ppm, depending on the model chosen.

**Quick warm-up time** of less than 28 seconds means you spend less time waiting for your job to print.

**Automatic colour sensing technology.** Using built-in image sensing technology, the ApeosPort-IV C5570 / C4470 / C3370 / C3371 / C2270 automatically recognises when colour is used and will capture this information in the device meters.

**Compliant to a Gigabit Ethernet environment.** The ApeosPort controller supports optional Gigabit Ethernet connections.

**To speed up copying** an express (simple) copy feature is available that displays only the basic copy settings. This is provided in addition to the normal copy feature.

**USB direct printing** is possible with the optional USB Media Print Kit. It can save time for users by printing PDF and TIFF files directly from a USB flash memory drive without having to boot up a PC. A perfect solution when the need to print is urgent<sup>3</sup>.

<sup>3</sup> Optional USB Media Print Kit is required.

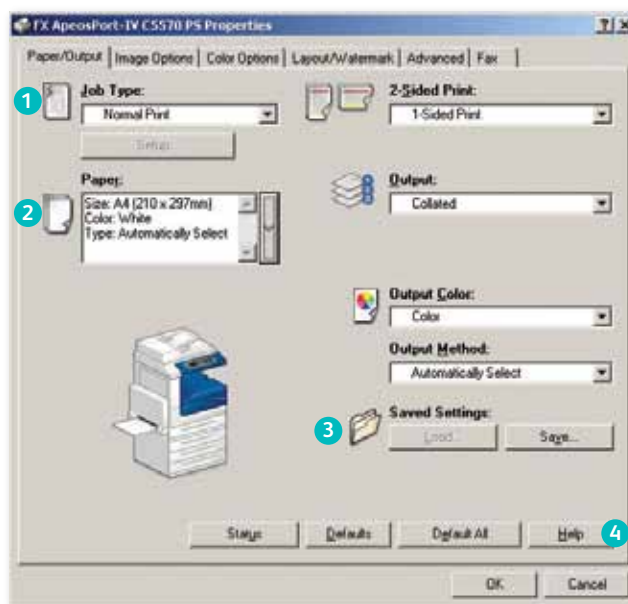


**WHQL certified PCL and PostScript print drivers** provide a consistent, easy-to-use interface for end-users that can greatly simplify your printing operations.

**Non-PostScript print driver** is now available which allows users to print documents from Mac OS X without adding the PostScript option.

**Save time by storing the settings** of frequently printed documents as favourites in your print driver. Settings include paper sizes, covers, duplexing, finishing and more.

**Advanced copy and print features.** Plenty of support for specialised print applications, such as Annotation, Delayed Print and Watermark right from the print driver.



- 1 Drop down menu for secure print, fax, save to mailbox and more
- 2 Paper selection summary window
- 3 Favourite print settings
- 4 Help function for feature descriptions and driver assistance

# Extensive fax capabilities

Network Server Fax, Internet Fax enablement (to avoid long distance charges) and Walk-up Fax eliminate the need for a dedicated fax machine.



Innovation that drives document production to a new level

**Electronic fax.** If there is a concern about faxes getting lost in piles of other documents, this feature eliminates paper wastage and provides peace of mind. It will route incoming faxes to a nominated email address, folder or network connected PC for retrieval and further distribution on demand.

Incoming fax



**Restrict users from sending faxes** to numbers not listed in your address book. This security feature will help protect the leakage of confidential information and reduce costs by preventing users from using the fax function for non-business related purposes.

**Capture and store undelivered faxes sent directly from the device.** The fax number can be edited at the user interface and re-sent if required, without rescanning the document(s).

**Block unwanted (junk) fax numbers.** This allows you to block specified fax numbers, so it does not print faxes received from those numbers in the future.

# Control access, manage costs

The ApeosPort-IV C5570 / C4470 / C3370 / C3371 / C2270 put you in control, with some of the most advanced output security features in the industry. And our advanced reporting and management tools help you keep costs down without sacrificing quality.

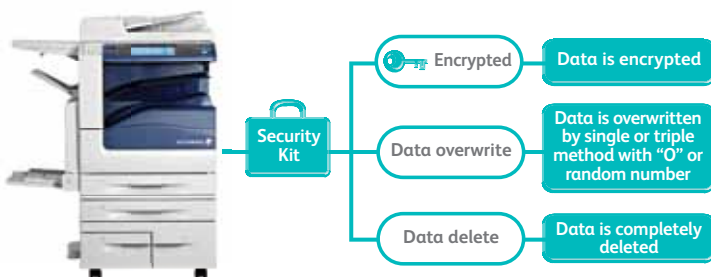
**Latest in Internet standards and protocols.** ApeosPort-IV C5570 / C4470 / C3370 / C3371 / C2270 multifunction devices support the IPv6 standard, which opens up additional IP addressing opportunities across the Internet and inside enterprise firewalls. IPv6 provides additional network security, better network routing and configuration, and improved support for high volume printing and larger print jobs.

**The optional Secure Watermark Kit** can help prevent the unauthorised reproduction of sensitive material. Documents featuring this secure watermark cannot be copied, scanned or faxed using similarly equipped devices.

**State-of-the-art security standards.** The ApeosPort-IV C5570 / C4470 / C3370 / C3371 / C2270 conform to the latest industry standards for network security, supporting IPSec to encrypt document content, SNMPv3 to securely transfer information to users and 802.1x to securely authenticate network devices before allowing document access.

**Secure Print** helps prevent unauthorised viewers from seeing documents by holding jobs in the print queue until the user is authenticated, eliminating paper wastage and securing confidential information.

**Data Security Kit** available with ApeosPort devices provides administrators with three security options:



**Remote fleet configuration.** CentreWare Internet Services allows for simplified device configuration and administration, and lets you easily clone configurations to other similar devices on the network.



- 1** Configure auditron
- 2** Upload email / fax address books as CSV files
- 3** Monitor paper tray / consumables status
- 4** Monitor job queues
- 5** Submit driverless print jobs

**Manage colour printing to minimise costs.** Control costs by nominating when colour could be used and by whom. This ensures that colour is available to those individuals who truly leverage its power - such as the sales teams and marketing department.

**Manage and track device usage using Xerox Standard Accounting.** Device usage reports can be obtained and presented as a CSV file for greater cost control of printing, copying, scanning and faxing.

**CentreWare Web** management tool makes it easy for administrators to install, configure, manage, monitor and report on all SNMP compliant devices on your network, regardless of manufacturer.

**Monitor the amount of time each device spends in all power modes** – stand-by, energy-saving/low power and sleep with CentreWare Internet Services. The Job Counter Report can also monitor the number of jobs that are printed in duplex or multiple images on one page. These metrics will allow businesses to better manage device performance for increased energy savings.

# Fuji Xerox and environmental sustainability

Fuji Xerox technology and services are designed and managed to improve sustainability performance for its customers. Our equipment features environmentally responsible design and energy efficient enhancements.

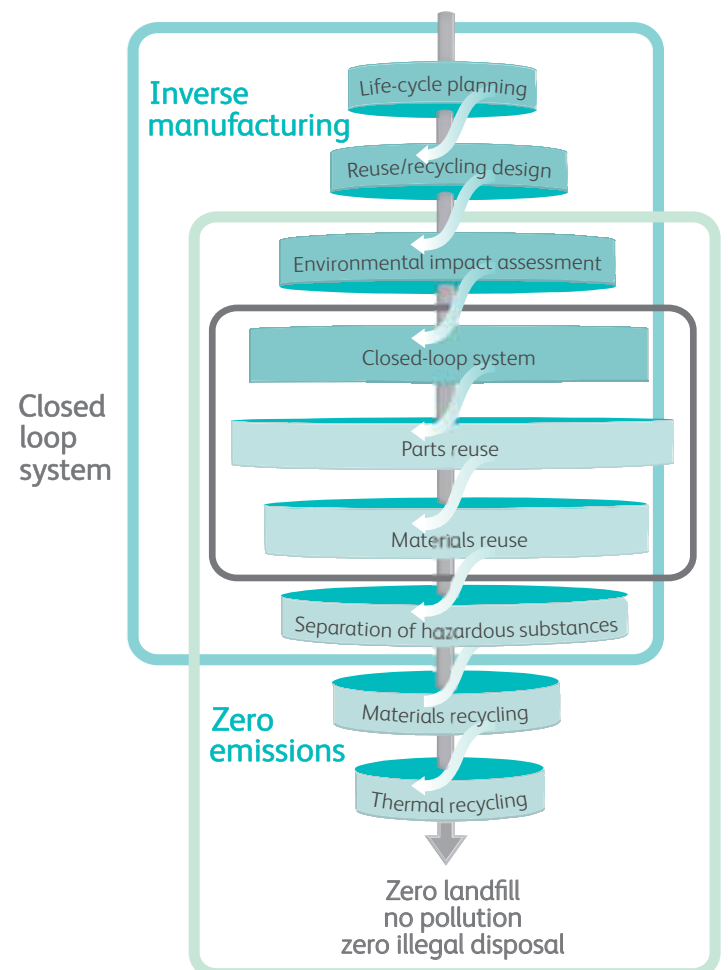
Our document software and digital technologies help reduce paper wastage and our services enable clients to improve the efficiency of document intensive business processes and optimise their equipment infrastructure to save costs and cut carbon emissions.

**Design for the environment.** Every piece of Fuji Xerox equipment is designed with the environment in mind and our achievements include:

- Eliminating the need to use hazardous material such as lead-based solder;
- Enabling low energy consumption during use of the machine;
- Utilising innovative and energy efficient toner;
- Minimising the use of new resources; and
- Facilitating the remanufacture or recycling of used machines and parts at end of life

Fuji Xerox is committed to improving sustainability performance for our customers. Read real-life customer case studies online from RTA, EDS Australia, Stockland, UNSW and ENERGEX - [http://www.fujixerox.com.au/customer\\_sustainability/casestudies\\_sustainability.jsp](http://www.fujixerox.com.au/customer_sustainability/casestudies_sustainability.jsp)

**A leader in product stewardship.** Fuji Xerox was first in the industry with products made from reused components and takes responsibility for all end-of-life products. We achieve over 99% resource recovery from the products returned to us at end of life.



# Extending your capabilities with Apeos Solutions

Image Gateway for Apeos 2.0 (IGA2.0) is a component based software platform for Fuji Xerox ApeosPort devices, providing integrated functionality for the multifunction device (MFD)<sup>1</sup>. Capabilities including server based cost recovery, scanning, faxing and a two-way access point to document management systems using a customisable, full colour, high resolution interface at the device touch panel.

<sup>1</sup>When considering IGA2.0, please ask Fuji Xerox for an overview of the integration and customisation that may be required.

## ACCRU

- Single sign-on capability to all features (specifically features relevant to you) utilising existing access cards
- Identifying output costs to individual users
- Allocating total usage costs to departmental level
- Access and information security ideal for large WAN environment but remaining cost effective for smaller environments
- User Authentication provides access to various applications running on the IGA2.0 server
- Web based reporting

## Fax communication

- Access the internal fax server module of IGA2.0 or connect to the external RightFax server (including support for FoIP)
- Desktop faxing capability
- Follow me faxing (available with ACCRU)



## Scan to and print from EDMS

- Promote data integrity and compliance requirements for document storage and access
- Tight integration to supported EDMS systems with search capabilities providing process improvements and security
- Consolidation of document storage and retrieval
- Collaboration; create, share and review content
- Cost savings with the ability to preview and retrieve files in 400+ file formats through the user interface

## Image and data capture

- Support for batch scanning (including blank page recognition)
- Extended output file formats and destinations such as Word, Excel and high compression PDF
- Minimise information leakage through MyFolder and MyEmail

# Specifications of ApeosPort-IV C5570 / C4470 / C3370 / C3371 / C2270 Series

## Copy Function

	AP-IV C5570	AP-IV C4470	AP-IV C3370	AP-IV C3371	AP-IV C2270
Type	Console Type				
Memory	2 GB				
HDD	80 GB (Used Space: 40 GB)				
Scanning Resolution	600 x 600 dpi				
Warm-up Time	28 sec or less (at room temperature 20°C) 24 sec or less when the main power is on (at room temperature 20°C)				
Original Paper Size	Max. 297 x 432 mm (A3, 11 x 17") for both sheet original and book original				
Output Paper Size	Max. SRA3 126 x 177" (320 x 449.6 mm), 12 x 18" (304.8 x 457.2 mm), For Bypass Tray, Max. 320 x 482.6 mm Min: A5, For Bypass Tray, Postcard (100 x 148 mm), Envelope (120 x 235 mm)				
Output Paper Weight <sup>1</sup>	Tray: 60 - 256 gsm, Bypass Tray: 55 - 280 gsm, HCF B1: 55 - 216 gsm				
First Copy Output Time	3.7 sec <BW> 5.2 sec <Colour>	4.4 sec <BW> 5.7 sec <Colour>	4.9 sec <BW> 6.4 sec <Colour>	4.9 sec <BW> 6.4 sec <Colour>	6.6 sec <BW> 8.7 sec <Colour>
Continuous Copy Speed	A4: 55 ppm <BW> 45 ppm <Colour> A3: 27 ppm <BW> 22 ppm <Colour> 25 ppm <Colour>	45 ppm <BW> 35 ppm <Colour> 20 ppm <BW> 14 ppm <Colour>	35 ppm <BW> 20 ppm <Colour> 17 ppm <BW> 14 ppm <Colour>	30 ppm <BW> 17 ppm <Colour> 17 ppm <BW> 14 ppm <Colour>	25 ppm <BW> 14 ppm <Colour> 14 ppm <BW> 14 ppm <Colour>
Paper Tray Capacity	<b>Standard:</b> 2,090 sheets: 500 sheets x 4 Tray + Bypass 90 sheets <b>Optional:</b> HCF B1: 2,030 sheets, Tandem Tray Module: 2,500 sheets <b>Max:</b> 5,120 sheets: 500 sheets + Tandem Tray 2,500 sheets (500 + 867 + 1,133 sheets) + HCF B1: 2,030 sheets + Bypass 90 sheets				
Output Tray Capacity	<b>Exit 2 Tray:</b> 250 sheets (A4 LEF), <b>Lower Center Tray:</b> 250 sheets (A4 LEF)				
Power Supply	AC 220 - 240 V, 10 A, 50 / 60 Hz				
Power Consumption	<b>Running:</b> up to 930 W, <b>Standby:</b> up to 130 W, <b>Sleep Mode:</b> 2 W				
Dimensions	W 640 x D 685 x H 1,128 mm (with Automatic Document Feeder)				
Machine weight	136 kg	136 kg	133 kg	133 kg	133 kg

<sup>1</sup> Performance may vary for heavyweight, coated and special stocks

## Print Function

	AP-IV C5570	AP-IV C4470	AP-IV C3370	AP-IV C3371	AP-IV C2270
Type	Built-in Type				
Print Resolution	1,200 x 2,400 dpi, 1,200 x 1,200 dpi				
PDL	PCL6, PCL5, Optional: Adobe® PostScript® 3™				
Operating System	PCL: Windows® 2000, Windows® XP, Windows Server® 2003, Windows Server® 2008, Windows Vista®, Windows® 7, Windows® XP×64, Windows Server® 2003×64, Windows Server® 2008×64, Windows Vista® ×64, Windows® 7 ×64 <b>Adobe® PostScript® 3™:</b> Windows® 2000, Windows® XP, Windows Server® 2003, Windows Server® 2008, Windows Vista®, Windows® 7, Windows® XP×64, Windows Server® 2003×64, Windows Server® 2008×64, Windows Vista® ×64, Windows® 7 ×64, Mac OS 8.6 / 9.2.2, Mac OS x 10.3.9 10.4.11 (except 10.4.7), Mac OS X 10.5				
Connectivity	<b>Standard:</b> Ethernet 100 BASE-TX / 10 BASE-T, USB 2.0 <b>Optional:</b> Ethernet 1000 BASE-T (Bidirectional Parallel IEEE1284-B)				

## Scan Function

	AP-IV C5570	AP-IV C4470	AP-IV C3370	AP-IV C3371	AP-IV C2270
Type	Colour Scanner				
Scanning Speed	<b>BW:</b> 70 ppm, <b>Colour:</b> 70 ppm				
Scanning Resolution	600 x 600 dpi, 400 x 400 dpi, 300 x 300 dpi, 200 x 200 dpi				
Connectivity	<b>Standard:</b> Ethernet 100 BASE-TX / 10 BASE-T <b>Optional:</b> Ethernet 1000 BASE-T				
Scan Destinations	Scan to Email, Folder, PC / Server (using FTP / SMB protocol)				

## Fax Function (Optional)

	AP-IV C5570	AP-IV C4470	AP-IV C3370	AP-IV C3371	AP-IV C2270
Send Document Size	Max. A3, 11 x 17"				
Transmission Time	Less than 3 seconds				
Transmission Mode	G3				
No. of Fax Lines	PBX, PSTN, Max. 3 ports				

## Duplex Automatic Document Feeder

	AP-IV C5570	AP-IV C4470	AP-IV C3370	AP-IV C3371	AP-IV C2270
Capacity	110 sheets				
Original Paper Size	Max: A3, 11 x 17", Min: A5				
Output Paper Weight	38 - 128 gsm, In Duplex: 50 - 128 gsm				
Feeding Speed (A4LEF)	55 ppm <BW> 50 ppm <Colour>	45 ppm <BW> 45 ppm <Colour>	35 ppm <BW> 35 ppm <Colour>	30 ppm <BW> 30 ppm <Colour>	25 ppm <BW> 25 ppm <Colour>

Descriptions in this material, product specifications and / or appearances are subject to change without prior notice due to improvements. Please note that the product colour appears differently from the actual colour as a result of properties of papers or printing ink. Windows and Windows NT are registered trademarks of Microsoft Corporation. NetWare is a registered trademark of Novell, Inc. in the United States. Macintosh, Mac OS and Ether Talk are trademarks of Apple Computer, Inc. PostScript is a registered trademark of Adobe Systems Incorporated in each country. HP-GL is a registered trademark of Hewlett-Packard Company. Other company names or product names are registered trademarks or trademarks of each company.

Spares for the standard configuration of installed machines is supported for up to 7 years from the date of the end of machine production.

## Finisher-A1 (Optional)<sup>2</sup>

	AP-IV C5570	AP-IV C4470	AP-IV C3370	AP-IV C3371	AP-IV C2270
Paper Size / Paper Weight	Max: A3, 11 x 17", Min: Postcards (100 x 148 mm), 55 - 220 gsm				
Stacker Capacity	[Without Staples] A4: 500 sheets, B4: 250 sheets, A3 or larger: 200 sheets, Mixed Size Stacking: 250 sheets, [With Staples]: 30 sets				
Staple Capacity	A4: 50 sheets (Max. 90 gsm), B4 or larger: 30 sheets (Max. 90 gsm)				
Paper Size	Max: A3, 11 x 17", Min: B5 LEF				
Position	Single (Front / Angled Staple)				

<sup>2</sup> The Optional Finisher-A1 cannot be installed on ApeosPort / DocuCentre-IV C5570 / C4470

## Finisher-B1 (Optional)

	AP-IV C5570	AP-IV C4470	AP-IV C3370	AP-IV C3371	AP-IV C2270
Paper Size / Paper Weight	Max: A3, 11 x 17", Min: B5, 55 - 220 gsm				
Stacker Capacity	[Without Staple] A4: 2,000 sheets, B4: 1,000 sheets, Mixed Size Stacking: 300 sheets [With Staples] A4: 100 sets or 1,000 sheets, B4 or larger: 75 sets or 750 sheets Booklet / Fold: 50 sets or 600 sheets, Fold: 500 sheets				
Staple Capacity	50 sheets (Max. 90 gsm)				
Paper Size	Max: A3, 11 x 17", Min: B5 LEF				
Position	Single (Front / Angled, Back / Straight), Dual (Parallel)				
Punch <sup>3</sup>					
Paper Size	A3, 11 x 17", B4, A4, A4 LEF, Letter (8.5 x 11"), Letter (8.5 x 11") LEF, B5 LEF				
Number of Holes	2 Holes or 4 Holes, or US 2 or 3 Holes <sup>4</sup>				
Paper Weight	55 - 200 gsm				
Booklet Finishing <sup>5</sup>					
Capacity	Booklet: 15 sheets, Fold: 5 sheets				
Paper Size	Max: A3, 11 x 17", Min: A4, Letter (8.5 x 11")				
Paper Weight	Saddle-Stapling: 64 - 80 gsm, Half-Folding: 64 - 105 gsm				

<sup>3</sup> Optional Finisher-B1 Punch Kit is required

<sup>4</sup> Can equip either one of 2 / 4 Hole Punch or US 2 or 3 Hole Punch for Finisher-B1

<sup>5</sup> Optional Booklet Maker Unit is required

## Booklet Finisher-C1 (Optional)

	AP-IV C5570	AP-IV C4470	AP-IV C3370	AP-IV C3371	AP-IV C2270
Paper Size / Paper Weight	Exit / Finisher Tray: Max: SRA3, 12 x 19", Min: B5, 55 - 220 gsm Booklet Tray: Max: SRA3, 12 x 18", Min: A4, Letter (8.5 x 11"), 64 - 90 gsm				
Stacker Capacity	Exit Tray: 500 sheets (A4), Finisher Tray: [Without Staple] A4: 1,500 sheets, B4 or larger: 1,500 sheets, Mixed Size Stacking: 300 sheets [With Staple] A4: 200 sets or 1,500 sheets, B4 or larger: 100 sets or 1,500 sheets, Booklet Tray: 20 sets				
Staple Capacity	50 sheets (Max. 90 gsm)				
Paper Size	Max: A3, 11 x 17", Min: B5				
Positions	Single (Front / Back / Angled), Dual (Parallel)				
Punch					
Paper Size	A3, 11 x 17", B4, A4, A4 LEF, Letter (8.5 x 11"), Letter (8.5 x 11") LEF, B5 LEF				
Number of Holes	2 or 4 holes (Option US 2 or 3 holes)				
Paper Weight	55 - 220 gsm				
Booklet Finishing					
Capacity	Saddle-Stapling: 15 sheets, Half-Folding: 5 sheets				
Paper Size	Max: A3, 12 x 18", Min: A4, Letter (8.5 x 11")				
Paper Weight	Saddle-Stapling: 64 - 90 gsm, Half-Folding: 64 - 105 gsm				

## High Capacity Feeder (Optional)

	AP-IV C5570	AP-IV C4470	AP-IV C3370	AP-IV C3371	AP-IV C2270
Paper Size / Paper Weight	A4 LEF, 8.5 x 11" LEF, B5 LEF, 55 - 216 gsm				
Capacity	2,030 sheets (80 gsm)				

## Customer Expectation Document (CED)

For detailed product specifications, optimum performance parameters and service clearances refer to the Customer Expectation Document.



**Reproduction Prohibitions** Please note that reproduction of the following is prohibited by law: Domestic and overseas bank notes and coins, government-issued securities, national bonds and local bond certificates. Unused postage stamps and post cards. Certificate stamps stipulated by law. The reproduction of works for copyright purposes (literary works, musical works, paintings, engravings, maps, cinematographic works, photographic works, etc.) is prohibited except when they are reproduced personally, at home or within limited range according to the above. This product is equipped with an anti-counterfeit feature. This feature is not intended to prevent illegal reproduction. Be extremely careful about the management of equipment used.



### For Your Safe Use

Before using the product, read the Instruction Manual carefully for proper use. Use the product with an appropriate adequate power source and voltage displayed. Be sure to establish a ground. In the case of a failure or short circuit, an electric shock may result.

For more information or detailed product specifications, call or visit us at

**Fuji Xerox Australia** 101 Waterloo Road,  
Macquarie Park NSW 2113  
Tel. (02) 9856 5000 Fax. (02) 9856 5003

[www.fujixerox.com.au](http://www.fujixerox.com.au)

